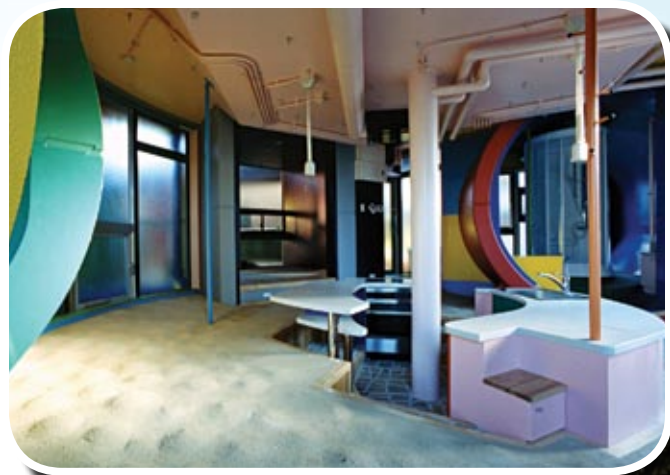


SCIENCE PHOTO OF THE MONTH



Comfort, Schumfort Construction meets the artist and the poet!

This nine-unit building outside Tokyo keeps its residents on edge. Called "Reversible Destiny Lofts", the building was designed by New York artist Shusaku Arakawa and poet Madeline Gins. Everything about it is meant to stimulate your brain — grainy floors that slope, bright colours, and light switches placed in unexpected places. The idea is this: if you're too comfortable, you get old faster. So, when your parents want to start that reno, this should give you some ideas... ↗

Courtesy, Reversible Destiny Lofts (4)